

# オリオン

Oboe

Piano

F Gm

This system contains the first three measures of the piece. The Oboe part begins with a whole rest in measure 1, followed by a quarter note G4 in measure 2, and a quarter note F4 in measure 3. The Piano accompaniment features whole rests in measure 1, and chords in measures 2 and 3: a G major triad (G4, B4, D5) in the right hand and a G minor triad (G3, Bb3, D4) in the left hand.

Pno.

4

C7 Dm Bb

This system contains measures 4 through 6. The Piano part continues with a whole rest in measure 4, followed by chords in measures 5 and 6: a C7 chord (C4, E4, G4, Bb4) in the right hand and a Dm chord (D3, F3, Ab3) in the left hand in measure 5; and a Bb major triad (Bb3, D4, F4) in the right hand and a Bb major triad (Bb3, D4, F4) in the left hand in measure 6.

Pno.

7

Gm C7 Dm

This system contains measures 7 through 9. The Piano part continues with a whole rest in measure 7, followed by chords in measures 8 and 9: a Gm chord (G3, Bb3, D4) in the right hand and a G major triad (G3, B4, D5) in the left hand in measure 8; and a C7 chord (C4, E4, G4, Bb4) in the right hand and a Dm chord (D3, F3, Ab3) in the left hand in measure 9.

B $\flat$

Gm

C7

10

Melodic line for measures 10-12. Measure 10 starts with a quarter rest followed by a quarter note G $\flat$ , then eighth notes G $\flat$ , A $\flat$ , B $\flat$ , C, D, E, F, G. Measure 11 has a quarter rest followed by a quarter note G $\flat$ , then eighth notes G $\flat$ , A $\flat$ , B $\flat$ , C, D, E, F, G. Measure 12 has a quarter note G $\flat$ , then eighth notes G $\flat$ , A $\flat$ , B $\flat$ , C, D, E, F, G.

10

Pno.

Piano accompaniment for measures 10-12. Measure 10: Treble clef has a chord of G $\flat$  (B $\flat$ 4, D $\flat$ 4, F4), Bass clef has a chord of G $\flat$  (G $\flat$ 2, B $\flat$ 2, D $\flat$ 3). Measure 11: Treble clef has a chord of Gm (G4, B $\flat$ 4, D $\flat$ 5), Bass clef has a chord of Gm (G2, B $\flat$ 2, D $\flat$ 3). Measure 12: Treble clef has a chord of C7 (C4, E $\flat$ 4, G4, B $\flat$ 4), Bass clef has a chord of C7 (C2, E $\flat$ 2, G2, B $\flat$ 2).

F

B $\flat$

Gm

13

Melodic line for measures 13-15. Measure 13 starts with a quarter rest followed by a quarter note F, then eighth notes F, G, A, B, C, D, E, F. Measure 14 has a quarter rest followed by a quarter note B $\flat$ , then eighth notes B $\flat$ , C, D, E, F, G, A, B $\flat$ . Measure 15 has a quarter rest followed by a quarter note B $\flat$ , then eighth notes B $\flat$ , C, D, E, F, G, A, B $\flat$ .

13

Pno.

Piano accompaniment for measures 13-15. Measure 13: Treble clef has a chord of F (F4, A4, C5), Bass clef has a chord of F (F2, A2, C3). Measure 14: Treble clef has a chord of B $\flat$  (B $\flat$ 4, D $\flat$ 5, F5), Bass clef has a chord of B $\flat$  (B $\flat$ 2, D $\flat$ 3, F3). Measure 15: Treble clef has a chord of Gm (G4, B $\flat$ 4, D $\flat$ 5), Bass clef has a chord of Gm (G2, B $\flat$ 2, D $\flat$ 3).

C7

F

B $\flat$

16

Melodic line for measures 16-18. Measure 16 has a quarter note C, then eighth notes C, D, E, F, G, A, B, C. Measure 17 starts with a quarter rest followed by a quarter note F, then eighth notes F, G, A, B, C, D, E, F. Measure 18 has a quarter note B $\flat$ , then eighth notes B $\flat$ , C, D, E, F, G, A, B $\flat$ .

16

Pno.

Piano accompaniment for measures 16-18. Measure 16: Treble clef has a chord of C7 (C4, E $\flat$ 4, G4, B $\flat$ 4), Bass clef has a chord of C7 (C2, E $\flat$ 2, G2, B $\flat$ 2). Measure 17: Treble clef has a chord of F (F4, A4, C5), Bass clef has a chord of F (F2, A2, C3). Measure 18: Treble clef has a chord of B $\flat$  (B $\flat$ 4, D $\flat$ 5, F5), Bass clef has a chord of B $\flat$  (B $\flat$ 2, D $\flat$ 3, F3).

Gm

C7

Dm

Bb

Gm

19

Melodic line for measures 19-21. Measure 19: quarter rest, quarter note G4, quarter note A4, quarter note Bb4. Measure 20: quarter note C5, quarter note Bb4, quarter note A4, quarter note G4. Measure 21: quarter note F4, quarter note E4, quarter note D4, quarter note C4.

19

Pno.

Piano accompaniment for measures 19-21. Measure 19: Gm chord (Bb2, G3, Bb3, D4). Measure 20: C7 chord (F2, G3, Bb3, C4). Measure 21: Dm chord (F2, G3, Bb3, D4).

C7

F

Dm

22

Melodic line for measures 22-24. Measure 22: quarter note G4, quarter note A4, quarter note Bb4, quarter note C5. Measure 23: quarter note Bb4, quarter note A4, quarter note G4, quarter note F4. Measure 24: quarter note E4, quarter note D4, quarter note C4, quarter rest.

22

Pno.

Piano accompaniment for measures 22-24. Measure 22: C7 chord (F2, G3, Bb3, C4). Measure 23: F chord (F2, A2, C3, F3). Measure 24: Dm chord (F2, G3, Bb3, D4).

Bb

Gm

C7

F

Bb

25

Melodic line for measures 25-27. Measure 25: quarter note G4, quarter note A4, quarter note Bb4, quarter note C5. Measure 26: quarter note Bb4, quarter note A4, quarter note G4, quarter note F4. Measure 27: quarter note E4, quarter note D4, quarter note C4, quarter note Bb3.

25

Pno.

Piano accompaniment for measures 25-27. Measure 25: Bb chord (Bb2, D3, F3, Bb3). Measure 26: Gm chord (Bb2, G3, Bb3, D4). Measure 27: C7 chord (F2, G3, Bb3, C4).

28 Gm C7 Dm

Piano accompaniment (Pno.) for measures 28-30. The right hand plays chords, and the left hand plays single notes. Chords are Gm, C7, and Dm.

31 Gm C7 Dm C7 F

Piano accompaniment (Pno.) for measures 31-33. The right hand plays chords, and the left hand plays single notes. Chords are Gm, C7, Dm, C7, and F.

35 C Dm G7 Am G

Piano accompaniment (Pno.) for measures 35-37. The right hand plays chords, and the left hand plays single notes. Chords are C, Dm, G7, Am, and G.

C Dm G7 Am F

39

Pno.

C Dm G7 Am G

43

Pno.

Am G7 C G7 C

47

Pno.

50 F Gm C7

Piano accompaniment for measures 50-52. The top staff contains a melodic line with eighth and quarter notes. The bottom staff contains chords: F major (F, A, C), G minor (Bb, D, F), and C7 (F, G, Bb, C).

53 F Bb Gm

Piano accompaniment for measures 53-55. The top staff contains a melodic line with quarter and eighth notes. The bottom staff contains chords: F major (F, A, C), Bb major (Bb, D, F), and G minor (Bb, D, F).

56 C7 F Bb

Piano accompaniment for measures 56-58. The top staff contains a melodic line with quarter and eighth notes. The bottom staff contains chords: C7 (F, G, Bb, C), F major (F, A, C), and Bb major (Bb, D, F).

Gm C7 Dm Bb Gm

59

Piano accompaniment for measures 59-61. The right hand plays chords and eighth notes, while the left hand plays chords and eighth notes. Chords Gm, C7, Dm, Bb, and Gm are indicated above the staff.

C7 F Dm

62

Piano accompaniment for measures 62-64. The right hand plays chords and eighth notes, while the left hand plays chords and eighth notes. Chords C7, F, and Dm are indicated above the staff.

Bb Gm C7 F Bb

65

Piano accompaniment for measures 65-69. The right hand plays chords and eighth notes, while the left hand plays chords and eighth notes. Chords Bb, Gm, C7, F, and Bb are indicated above the staff.

68 Gm C7 Dm

Piano score for measures 68-70. The top staff contains a melodic line starting with a whole rest in measure 68, followed by eighth and quarter notes. The bottom staff contains piano accompaniment with chords and some melodic movement. Chords are Gm, C7, and Dm.

71 Gm C7 Dm C7 F

Piano score for measures 71-73. The top staff contains a melodic line with eighth and quarter notes. The bottom staff contains piano accompaniment with chords and some melodic movement. Chords are Gm, C7, Dm, C7, and F.

75 C Dm G7 Am G

Piano score for measures 75-77. The top staff contains a melodic line with eighth and quarter notes. The bottom staff contains piano accompaniment with chords and some melodic movement. Chords are C, Dm, G7, Am, and G.



C Dm G7 Am F

79

Pno.

C Dm G7 Am G

83

Pno.

Am G7 C G7 C

87

Pno.

G7

Am

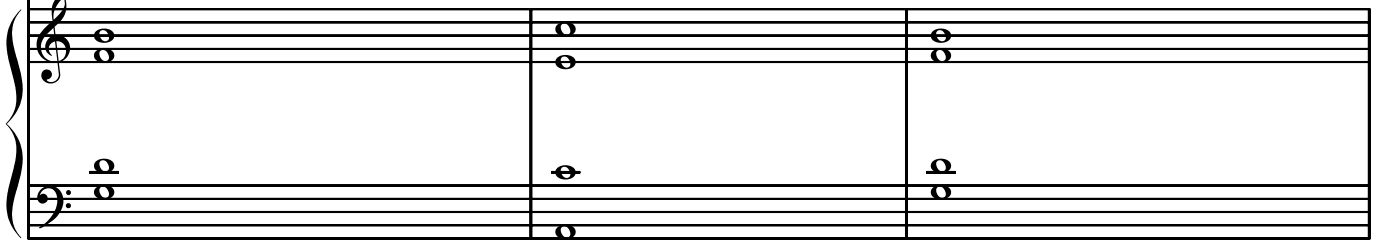
G7

91



91

Pno.



Am

Dm

G7

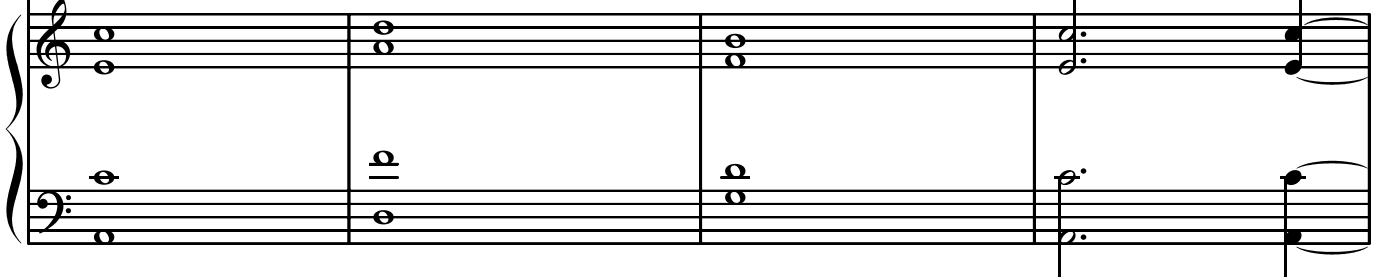
Am

94



94

Pno.



G7

C

Dm

G7

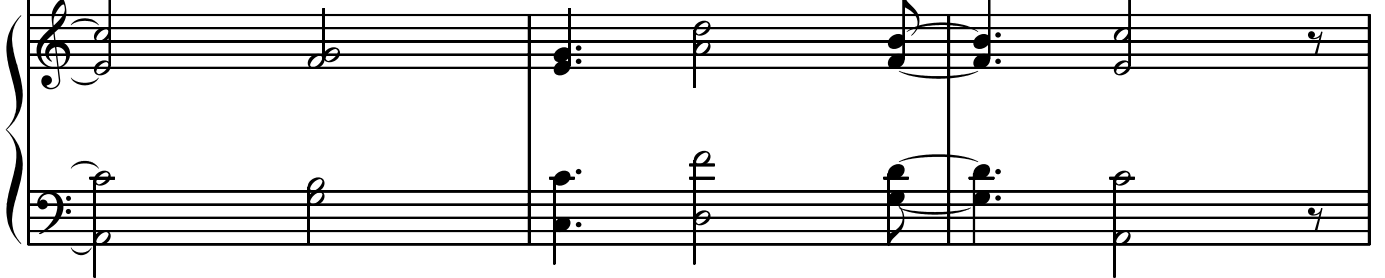
Am

98



98

Pno.



G C Dm G7 Am F

101

Pno.

C Dm G7 Am

105

Pno.

G Am G7 C G7 C

109

Pno.

113 G F

Piano accompaniment for measures 113-115. Measure 113: Right hand has a G major chord (G-B-D), left hand has a G note. Measure 114: Right hand has a G major chord (G-B-D), left hand has a G note. Measure 115: Right hand has an F major chord (F-A-C), left hand has an F note.

116 Gm C7 Dm

Piano accompaniment for measures 116-118. Measure 116: Right hand has a G minor chord (G-Bb-D), left hand has a G note. Measure 117: Right hand has a C7 chord (C-E-G-Bb), left hand has a C note. Measure 118: Right hand has a D minor chord (D-F-A), left hand has a D note.

119 Bb Gm C7

Piano accompaniment for measures 119-121. Measure 119: Right hand has a Bb major chord (Bb-D-F), left hand has a Bb note. Measure 120: Right hand has a G minor chord (G-Bb-D), left hand has a G note. Measure 121: Right hand has a C7 chord (C-E-G-Bb), left hand has a C note.

Dm

B $\flat$

122

A single musical staff with a treble clef and a key signature of one flat. It contains a melodic line starting with a quarter note, followed by a half note, and then a slur over two quarter notes.

122

Pno.

Piano accompaniment for two staves, treble and bass clef, with a key signature of one flat. The left hand plays chords, and the right hand plays chords with slurs. The first measure shows a chord in the right hand and a chord in the left hand. The second and third measures show chords in both hands, with slurs connecting notes across measures.